



# Heidelberg Materials agrees to acquire Maas Group's Construction Materials business

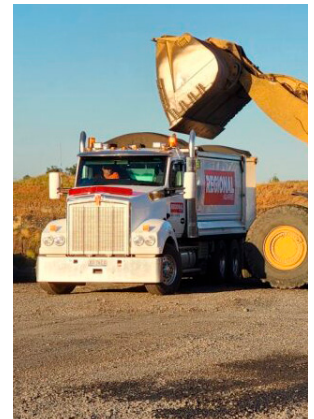


Heidelberg Materials



# Heidelberg Materials agrees to acquire Maas Group's Construction Materials business

- On **4 February 2026**, Heidelberg Materials Australia agreed to acquire the Construction Materials business of Maas Group Holdings, an ASX-listed diversified industrial group and leading supplier of aggregates, ready-mix concrete, and asphalt in Eastern Australia
- The transaction is subject to regulatory approvals (including the Australian Competition and Consumer Commission and the Foreign Investment Review Board), as well as other customary conditions, including approval from Maas Group shareholders
- The assets to be acquired include 40 quarries with combined approved reserves of more than 350 million tonnes, 22 ready-mix concrete plants, 2 asphalt operations, 1 C&D recycling site plus associated businesses providing new capabilities in geotechnical services, machinery sales/hire and earthmoving contracting
- More than **1,000** Maas employees will join the Heidelberg Materials Australia team



**The transaction marks a significant step in expanding our footprint in Australia, improving aggregate capacity and concrete and asphalt supply capabilities in key markets.**

**It reinforces our ongoing commitment to a pure-play strategy as a leading global heavy building materials company.**

## This acquisition enhances Heidelberg Materials' capabilities and supports sustainable long-term growth in Australia

- Expands footprint in key markets of Australia, enhanced by a team of over 1,000 skilled employees across quarries, concrete, logistics, asphalt and civil support
- Operations acquired complement the HMA business in Queensland, New South Wales and Victoria
- Improves HMA's aggregate capacity and distribution network
- Secures long term cement supply along the eastern seaboard
- Improves procurement economics for key inputs (bitumen, electricity, explosives)
- Enhances capability to deliver into multi-year infrastructure pipelines in Eastern Australia
- Promotes circularity through high-quality, sustainable products



## Established Australian brands that complement Heidelberg Materials' core capabilities

### Aggregate Quarries

Improves aggregate capacity and reserve position



### Readymix Concrete

Complements existing HMA network



### Asphalt

End-to-end asphalt capabilities including laying and spray sealing



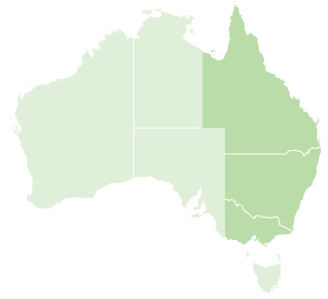
### Materials Testing and Geological Services

External and internal geotechnical expertise



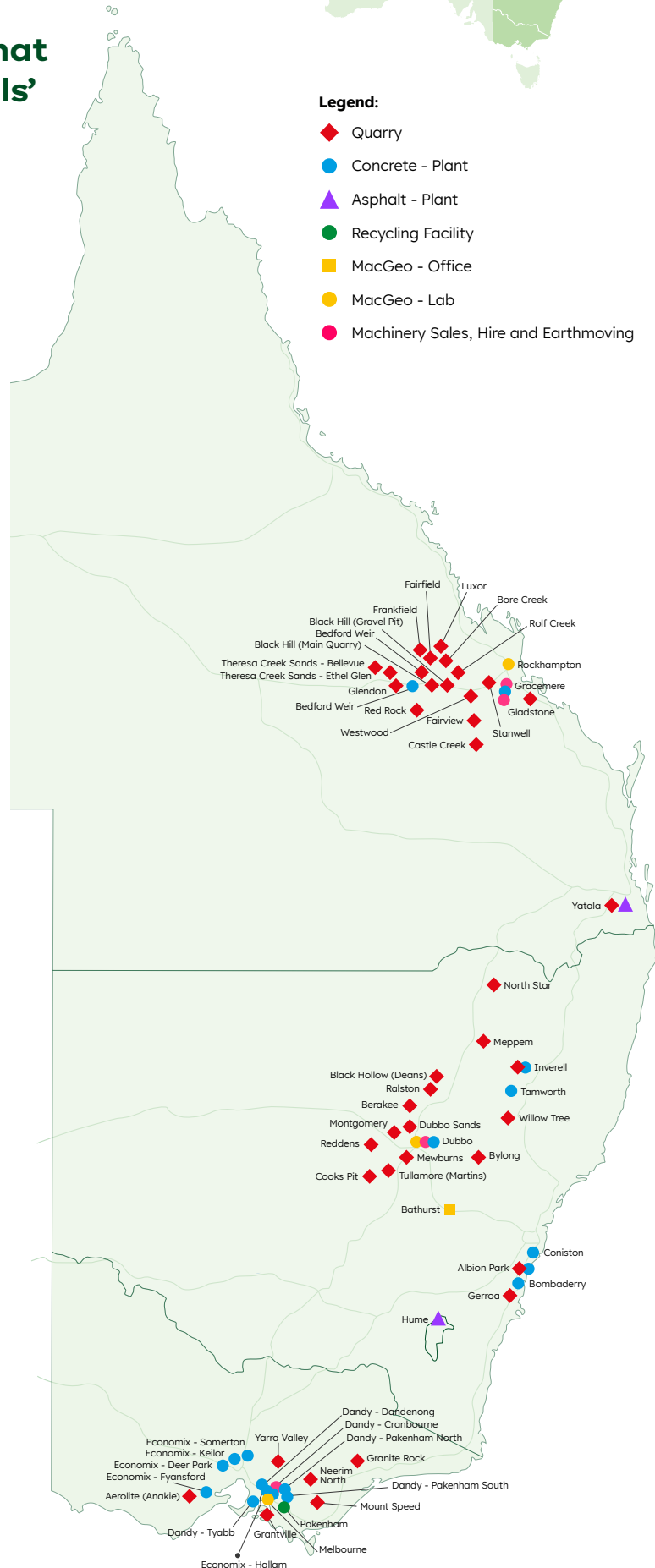
### Machinery Sales/Hire and Earthmoving

Adds well-aligned businesses that complement the core business



#### Legend:

- ◆ Quarry
- Concrete - Plant
- ▲ Asphalt - Plant
- Recycling Facility
- MacGeo - Office
- MacGeo - Lab
- Machinery Sales, Hire and Earthmoving







## A strong, well-capitalised platform to support Australian growth

### Aggregate Quarries

40  
Quarries

1  
C&D Recycling Site

8  
Mobile Crushing Trains

124  
Owned Tippers

### Readymix Concrete

18  
Fixed RMX Sites

4  
Mobile RMX Plants

199  
Owned Agitators

### Materials Testing and Geological Services

5  
Labs (NSW, QLD, VIC)

8  
Mobile Labs

12  
Drill Rigs

### Asphalt

2  
Asphalt Sites

10  
Laying Crews

8  
Spray Seal Crews

### Machinery sales, hire and earthmoving

Nationwide Machinery:  
**Focused on yellow machinery sales and hire**

PWE Quarry Services:  
**Load and haul in Melbourne region**

Heidelberg Materials Australia Holdings Pty Ltd  
ABN 98 611 565 649

Level 14, 35 Clarence Street,  
Sydney NSW 2000

[www.heidelbergmaterials.com.au](http://www.heidelbergmaterials.com.au)