



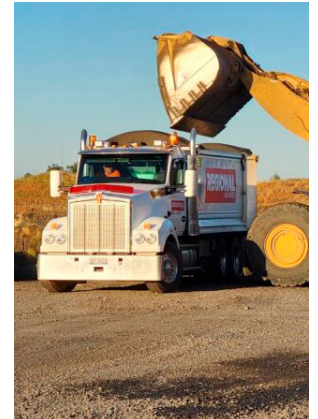
Heidelberg Materials agrees to acquire Maas Group's Construction Materials business



Heidelberg Materials

Heidelberg Materials agrees to acquire Maas Group's Construction Materials business

- On **4 February 2026**, Heidelberg Materials Australia agreed to acquire the Construction Materials business of Maas Group Holdings, an ASX-listed diversified industrial group and leading supplier of aggregates, ready-mix concrete, and asphalt in Eastern Australia
- The transaction is subject to regulatory approvals (including the Australian Competition and Consumer Commission and the Foreign Investment Review Board), as well as other customary conditions, including approval from Maas Group shareholders
- The assets to be acquired include 43 quarries with combined approved reserves of more than 350 million tonnes, 22 ready-mix concrete plants, 2 asphalt operations, 1 C&D recycling site plus associated businesses providing new capabilities in geotechnical services, machinery sales/hire and earthmoving contracting
- More than **1,000** Maas employees will join the Heidelberg Materials Australia team



The transaction marks a significant step in expanding our footprint in Australia, improving aggregate capacity and concrete and asphalt supply capabilities in key markets.

It reinforces our ongoing commitment to a pure-play strategy as a leading global heavy building materials company.

This acquisition enhances Heidelberg Materials' capabilities and supports sustainable long-term growth in Australia

- Expands footprint in key markets of Australia, enhanced by a team of over 1,000 skilled employees across quarries, concrete, logistics, asphalt and civil support
- Operations acquired complement the HMA business in Queensland, New South Wales and Victoria
- Improves HMA's aggregate capacity and distribution network
- Secures long term cement supply along the eastern seaboard
- Improves procurement economics for key inputs (bitumen, electricity, explosives)
- Enhances capability to deliver into multi-year infrastructure pipelines in Eastern Australia
- Promotes circularity through high-quality, sustainable products

Established Australian brands that complement Heidelberg Materials' core capabilities

Aggregate Quarries

Improves aggregate capacity and reserve position



Readymix Concrete

Complements existing HMA network



Asphalt

End-to-end asphalt capabilities including laying and spray sealing



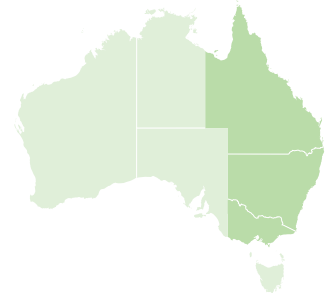
Materials Testing and Geological Services

External and internal geotechnical expertise



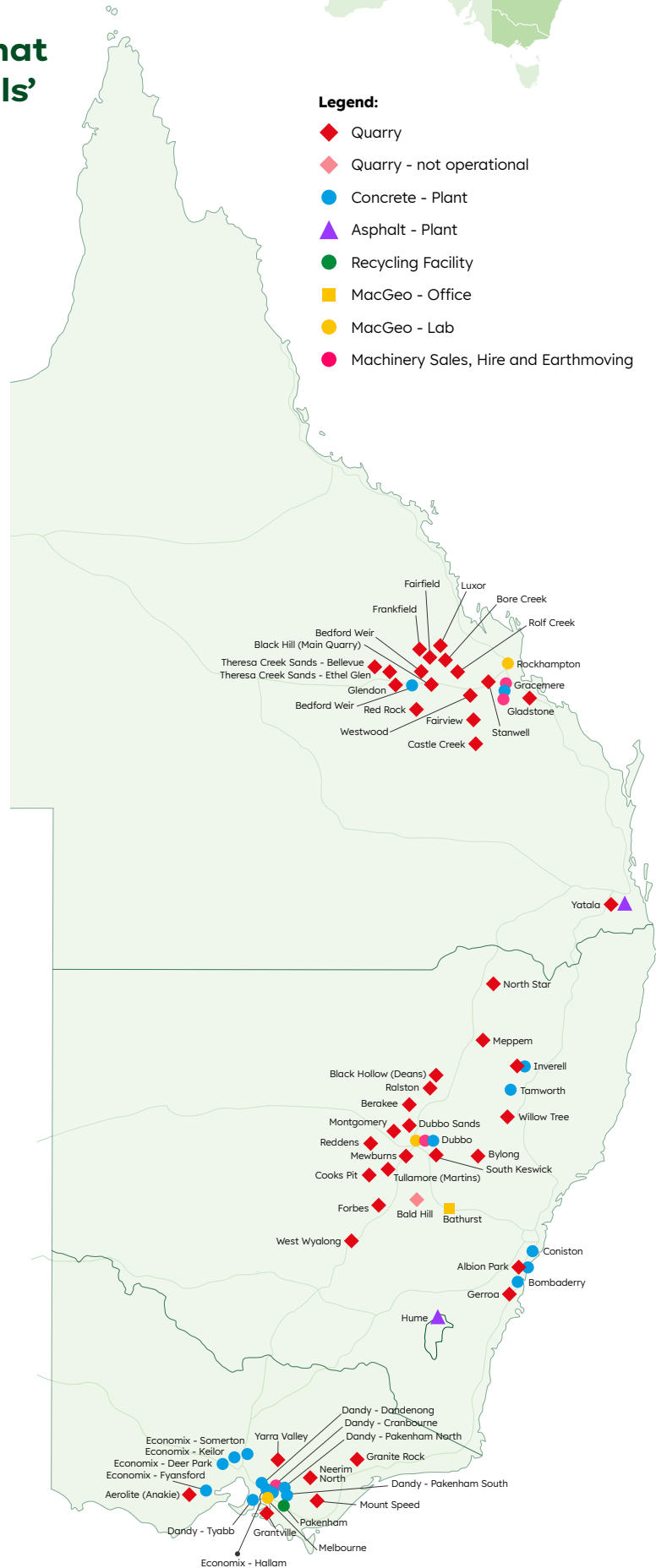
Machinery Sales/Hire and Earthmoving

Adds well-aligned businesses that complement the core business



Legend:

- ◆ Quarry
- ◇ Quarry - not operational
- Concrete - Plant
- ▲ Asphalt - Plant
- Recycling Facility
- MacGeo - Office
- MacGeo - Lab
- Machinery Sales, Hire and Earthmoving





A strong, well-capitalised platform to support Australian growth

Aggregate Quarries

43
Quarries

1
C&D Recycling Site

8
Mobile Crushing Trains

124
Owned Tippers

Readymix Concrete

18
Fixed RMX Sites

4
Mobile RMX Plants

199
Owned Agitators

Materials Testing and Geological Services

5
Labs (NSW, QLD, VIC)

8
Mobile Labs

12
Drill Rigs

Asphalt

2
Asphalt Sites

10
Laying Crews

8
Spray Seal Crews

Machinery sales, hire and earthmoving

Nationwide Machinery:
Focused on yellow machinery sales and hire

PWE Quarry Services:
Load and haul in Melbourne region

Heidelberg Materials Australia Holdings Pty Ltd
ABN 98 611 565 649

Level 14, 35 Clarence Street,
Sydney NSW 2000

www.heidelbergmaterials.com.au